

The **Sleek LED Mirror** features a sensor on/off switch that is great for shaving and makeup, dimmer to adjust lighting and anti-fog technology. All Kubebath LED mirrors are made with the highest quality components. The LED strips have an average lifetime of 50,000 hours, making them almost maintenance free.

FRONT VIEW



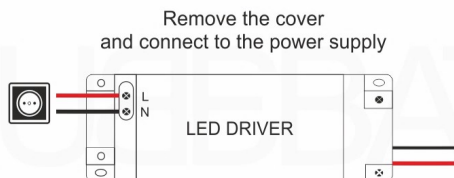
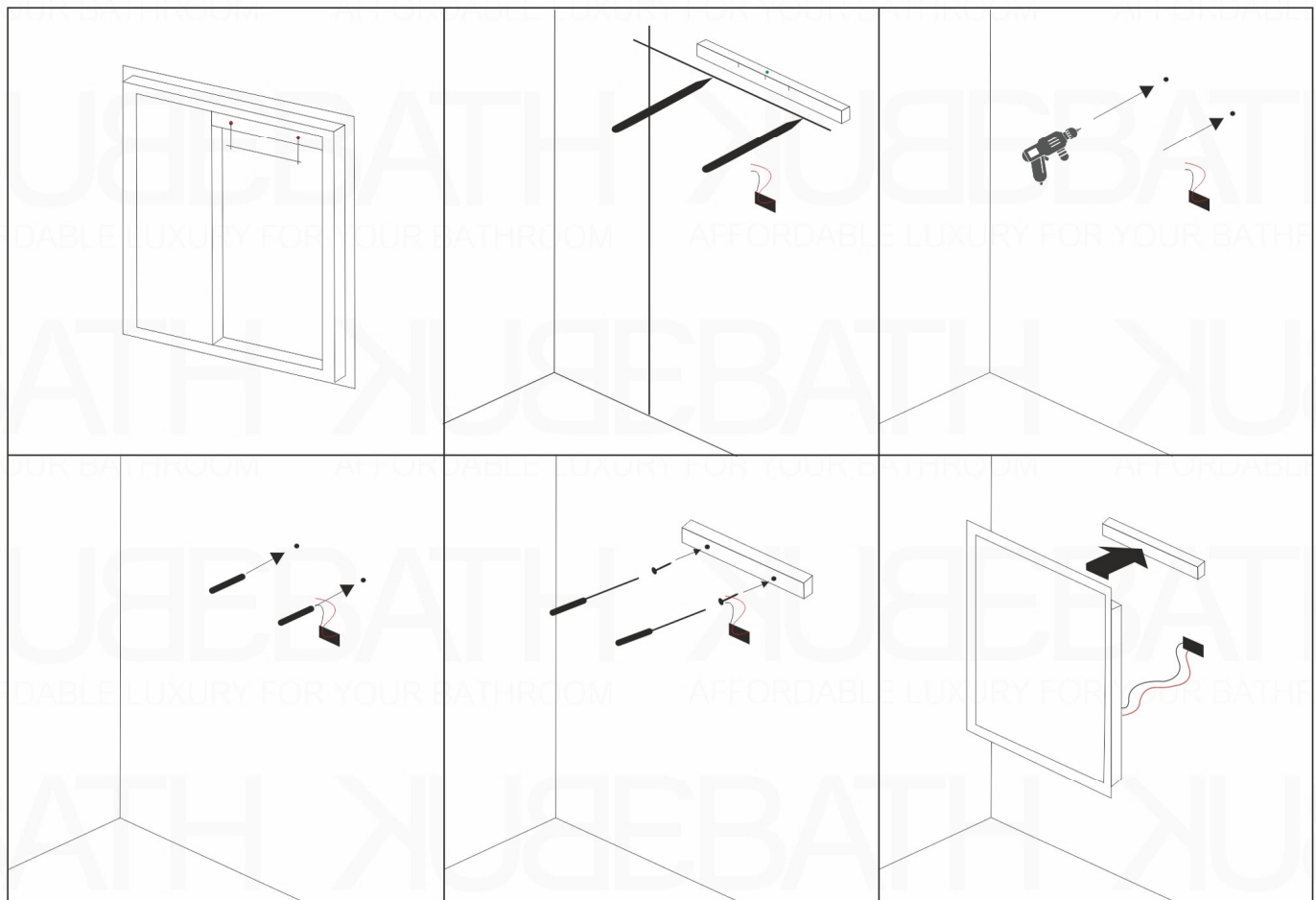
SIDE VIEW



TOP VIEW



SKU	Width x Depth x Height	
	inch	mm
SKRLED24	23.03 x 1.18 x 31.49	585 x 30 x 800
SKRLED30	29.13 x 1.18 x 31.49	740 x 30 x 800
SKRLED36	35.03 x 1.18 x 31.49	890 x 30 x 800
SKRLED48	47.04 x 1.18 x 31.49	1195 x 30 x 800
SKRLED60	59.05 x 1.18 x 31.49	1500 x 30 x 800
SKRLED70	70.07 x 1.18 x 31.49	1780 x 30 x 800



The LED driver inside the enclosed icon mirror has already converted the electric to 110 volts. You can connect the wires that are coming out of the centre of the back of the mirror directly to your electrical connection box. The icon wires get connected to your 110 Volt electric box that you should have placed in the wall, behind where your icon mirror will be mounted. It doesn't have to be exactly in the centre as the lead wire gives you flexibility in the placement. However we suggest you place it somewhere towards the center.