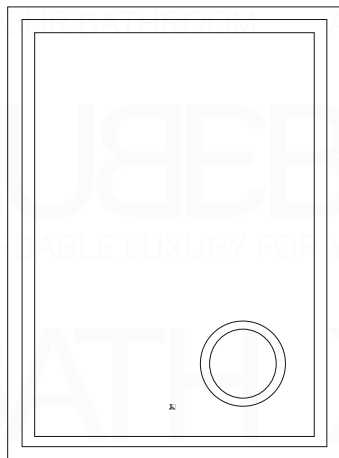


FRONT VIEW



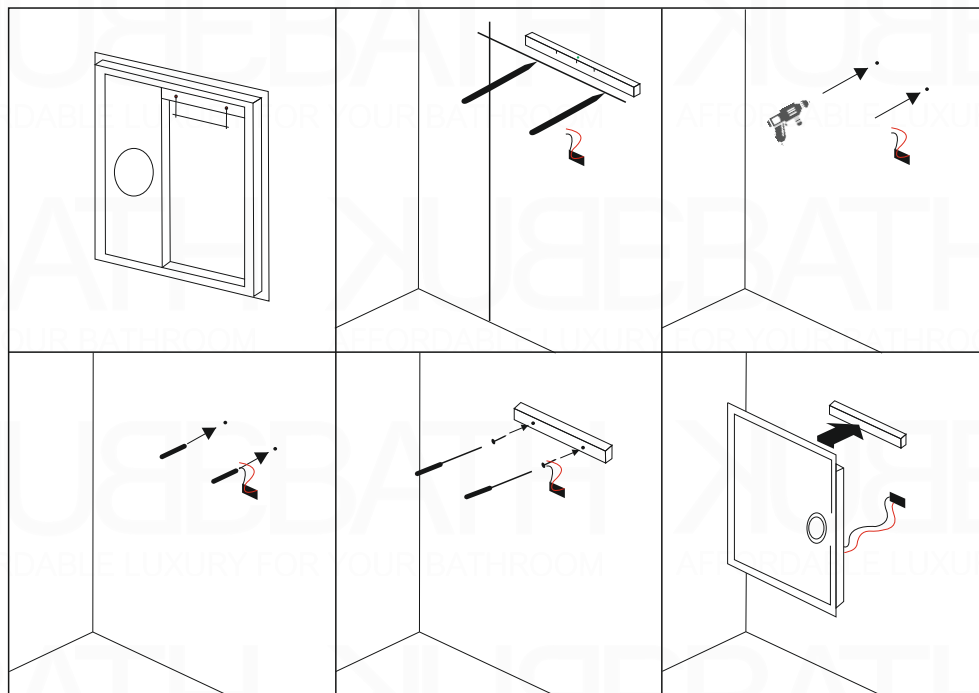
SIDE VIEW



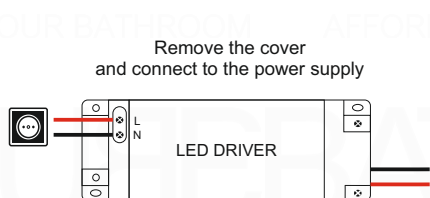
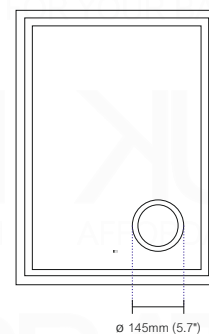
TOP VIEW



SKU	Width x Depth x Height	
	inch	mm
KLEDM24	23.03 x 1.18 x 31.49	585 x 30 x 800
KLEDM30	29.13 x 1.18 x 31.49	740 x 30 x 800
KLEDM36	35.03 x 1.18 x 31.49	890 x 30 x 800
KLEDM48	47.04 x 1.18 x 31.49	1195 x 30 x 800
KLEDM60	59.05 x 1.18 x 31.49	1500 x 30 x 800
KLEDM70	70.07 x 1.18 x 31.49	1780 x 30 x 800



LED Magnifier



The LED driver inside the enclosed icon mirror has already converted the electric to 110 volts. You can connect the wires that are coming out of the centre of the back of the mirror directly to your electrical connection box. The icon wires get connected to your 110 Volt electric box that you should have placed in the wall, behind where your icon mirror will be mounted. It doesn't have to be exactly in the centre as the lead wire gives you flexibility in the placement. However we suggest you place it somewhere towards the center.