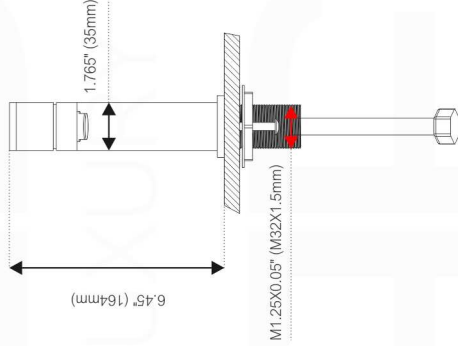
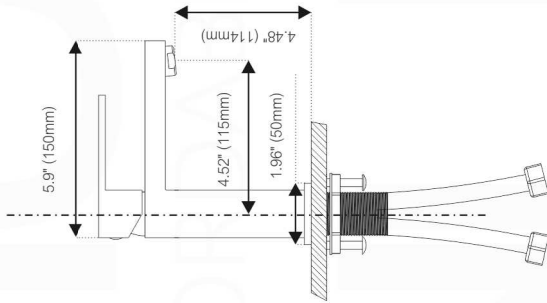


# AQUA KUBO

Aqua Single Lever Faucet / SKU: AFB231



## Features

- Solid brass construction
- Single hole construction
- Ceramic disk cartridge
- Single lever faucet
- Flexible supply lines with 3/8" or 1/2" compression fittings. Standard plumbing connections
- Finish resist corrosion and tarnishing

## FLOW

Water usage is limited to these maximum flow rates as indicated by the corresponding product markings

- North America: 1.5 gpm max (5.7L/min) at 60psi
- California: 1.2 gpm max \*4.5L/min) at 60psi

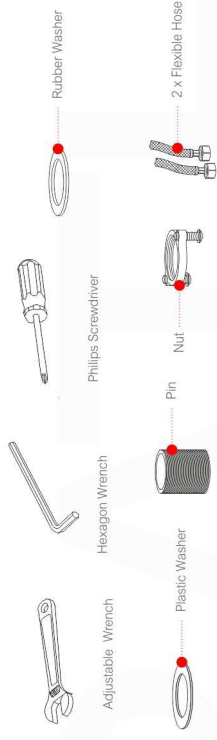
## STANDARDS

Certified to CUPC | AB1953 | NSF/ANSI 61

ADA  for lever handle

## Before Your Installation

Please make sure you have the parts indicated below:



## NOTES BEFORE INSTALLATION

1. Please check that all components are present.
2. Before installation ensure that all feed lines are clear of debris and on/off valve is present.
3. Ensure water pressure is between 20-125 PSI (includes combination of hot/cold feed line).
4. Pictures in the manual are general in content and may not represent exactly your purchased faucet. If you are having difficulties, please contact a professional plumber.
5. If you will be away from home for an extended period, you should shut off the main water supply

## MAINTENANCE

Your new faucet is designed for years of trouble-free performance. Keep it looking new by cleaning it periodically with a soft cloth. Avoid abrasive cleaners, steel wool and harsh chemicals as these will scratch, dull, and/or damage the finish and/or product void your warranty.

## SAFETY TIPS

Be sure to shut off water supply prior to installation. Protect your eyes with safety glasses when cutting or soldering water supply lines. Cover your drain to avoid losing parts.

## IMPORTANT POINTS

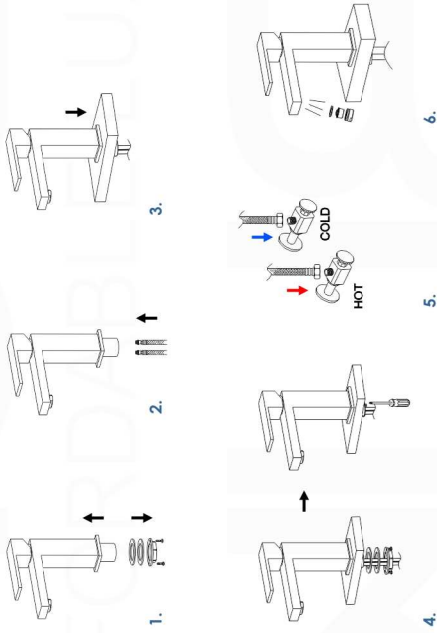
Prior to beginning installation, turn off the cold and hot water lines and open the hot and cold knobs on the old faucet to release build-up pressure. When installing your new faucet, turn the connector nuts finger-tight, then use one wrench to anchor the fitting and a second wrench to tighten the nut one additional turn. Connections that are too tight will reduce the integrity of the system. Wrap all threaded connections with Teflon tape available at your local hardware or plumbing supply store. Always wrap in a clockwise direction. All installations can vary depending on how your previous faucet was installed. Not all necessary supplies to install your faucet are included, however, they are available wherever plumbing supplies are sold.

**We recommend installation to be done by qualified licensed plumber.**

Prior to installation please read the instructions thoroughly, confirm that all parts are included and visually inspect the unit for any defects. If you have any questions please contact the Store Department before proceeding with installation.

## ASSEMBLY

1. Remove the rubber washer, metal washer and locking nut from the faucet.
2. Screw and hand tighten the hot and cold flexible hoses to the faucet. DO NOT use a wrench to tighten hoses as this may damage the hose and/or the hose threads.
3. Install the faucet through center hole.
4. Re-install the rubber washer followed by the metal washer and lock-nut. Hand tighten then tighten further using a screw driver to tighten lock-nut screws.
5. Attach flexible hose to water supply.
6. Remove the aerator and turn on faucet for 1 minute to flush debris from faucet and feed lines. Turn faucet off and re-install aerator.



## Single-Handle Lavatory Faucet

Note: This faucet is designed to be installed through 1 hole, ø 1-3/8" min.

**KUBEBATH**  
AFFORDABLE LUXURY FOR YOUR BATHROOM

